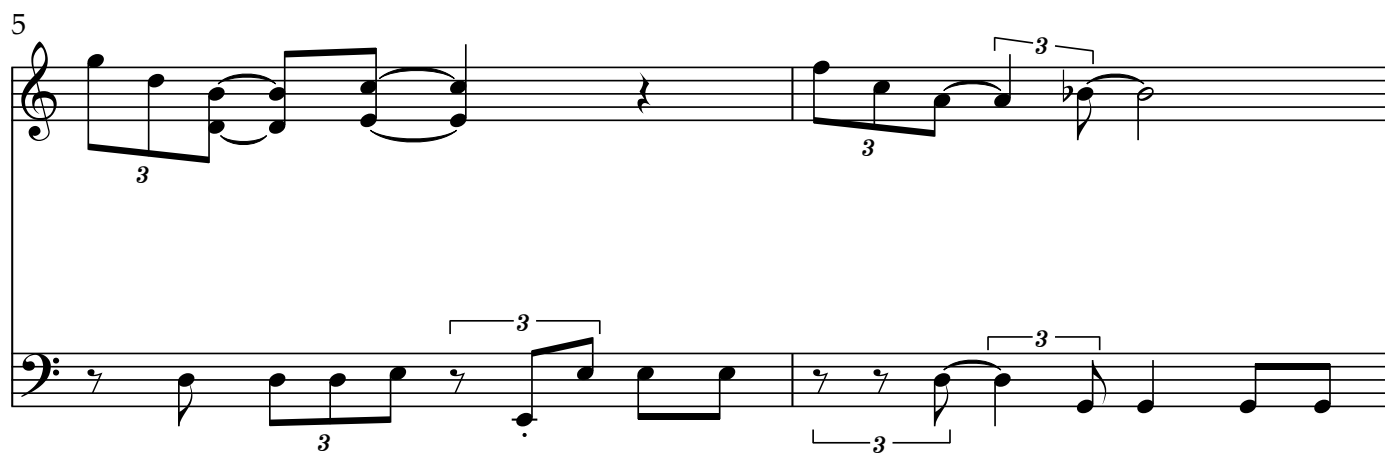
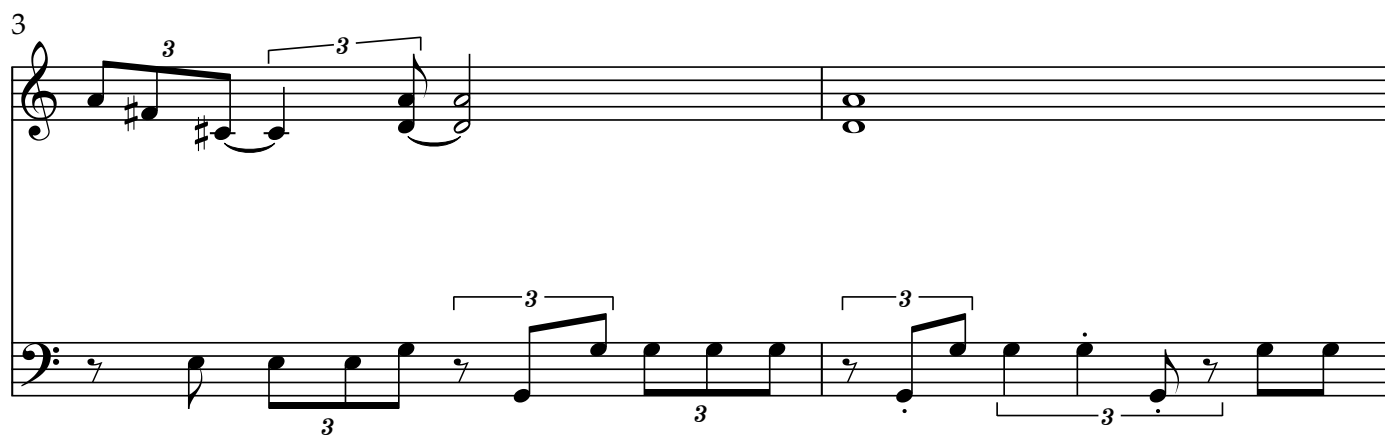
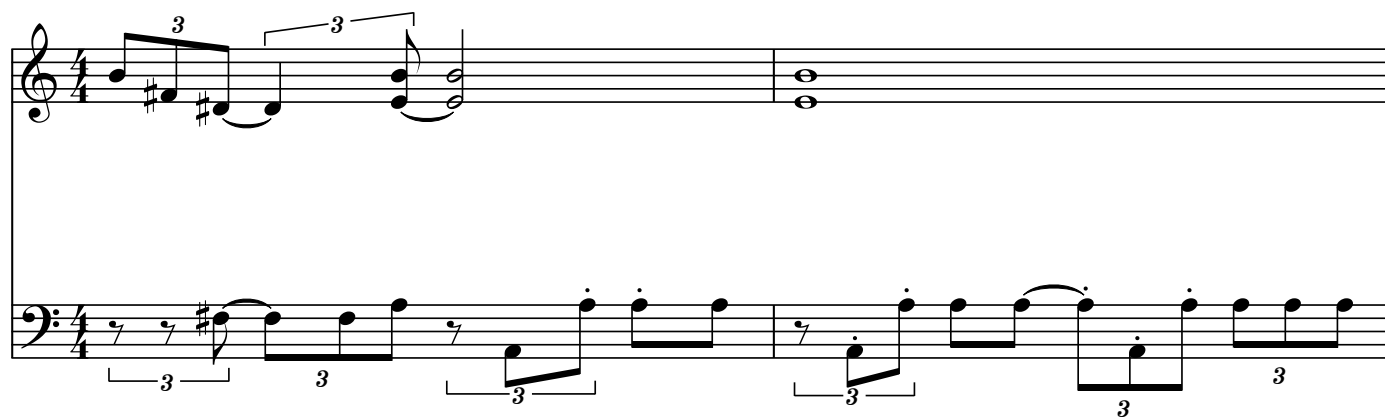


every bodys in a band



2

7

3

3

3

3

9

3

3

3

3

11

3

3

3

3

13

3

3

3

3

15

Measures 15 and 16 of a musical score. Measure 15 features a treble clef with a key signature of one sharp (F#) and a common time signature (C). The bass clef contains a triplet of eighth notes (F#, G, A) followed by a dotted quarter note (B) and a half note (C). Measure 16 continues the bass line with a triplet of eighth notes (D, E, F#) followed by a dotted quarter note (G) and a half note (A).

17

Measures 17 and 18 of a musical score. Measure 17 features a treble clef with a key signature of one sharp (F#) and a common time signature (C). The bass clef contains a triplet of eighth notes (F#, G, A) followed by a dotted quarter note (B) and a half note (C). Measure 18 continues the bass line with a triplet of eighth notes (D, E, F#) followed by a dotted quarter note (G) and a half note (A).

19

Measures 19 and 20 of a musical score. Measure 19 features a treble clef with a key signature of one sharp (F#) and a common time signature (C). The bass clef contains a triplet of eighth notes (F#, G, A) followed by a dotted quarter note (B) and a half note (C). Measure 20 continues the bass line with a triplet of eighth notes (D, E, F#) followed by a dotted quarter note (G) and a half note (A).

21

Measures 21 and 22 of a musical score. Measure 21 features a treble clef with a key signature of one sharp (F#) and a common time signature (C). The bass clef contains a triplet of eighth notes (F#, G, A) followed by a dotted quarter note (B) and a half note (C). Measure 22 continues the bass line with a triplet of eighth notes (D, E, F#) followed by a dotted quarter note (G) and a half note (A).

23

Measures 23 and 24 of a musical score. Measure 23 features a treble clef with a key signature of one flat (Bb) and a common time signature (C). The bass clef contains a triplet of eighth notes (F, G, A) followed by a dotted quarter note (Bb) and a half note (C). Measure 24 continues the bass line with a triplet of eighth notes (D, E, F) followed by a dotted quarter note (G) and a half note (A).